

mcads[®]



MCDS GROUP OF COMPANIES

MCDS SOFTWARE (M) SDN BHD (1053297-U)



Notice

MCDS SOFTWARE SDN. BHD. makes no warranty of any kind with regards to this material, including, but not limited to, implied warranties of the merchantability and fitness for a particular purpose.

MCDS SOFTWARE SDN. BHD. shall not be liable for errors contained herein or for incidental or consequential damages in connection with the furnishing, performance, or use of this material.

No part of this document may be photocopied, reproduced or translated to another language without prior consent of MCDS SOFTWARE SDN. BHD.

For more Legal & copyright info please visit to <http://www.mcDS.com.my/legal/>

Date : 01 October 2014



Appendices

There are a few appendices provided at the last portion of the manual. Some basic code/decode listing is provided as a reference so that user can adapt easily the application of MCDS. Before the user starts to use the system for data entry or mere system inquiry, user is advised to browse through the codes.

Terms Used In This

As the users start to read the user guide, there will be many terms User Guide which users have come across before especially those using Microsoft applications.

Note

This user guide does not attempt to explain the basic terms such as menu options, icons, screens and mouse clicks. For more information on these terms, please refer to the Microsoft Windows manual or other manuals which provide some guides as how to start using a computer.



Menu Selection/Path Selection of menu option is indicated by a series of menu options separated by vertical bars. For example, File | Exit means that users should select File from the main menu and subsequently select the Exit option from the pull-down File menu. The eDec.Asia Malaysian Customs Declaration System subscription provides you with email and telephone technical support. In addition, your subscription includes 1 year free maintenance on Up-To-Date information, features and support on subscribed modules.

Subscription DON'T include the support as following:

- 1) System crash due to computer virus infection.
- 2) Network equipment error (For LAN users).
- 3) Internet connections problem.
- 4) Port (9898, 9595, 7950) Blocked by the Firewall.
- 5) Re-installation required due to computer hardware upgrade or relocation.
- 6) Re-training for the new staffs
- 7) Computer Hardware failure
- 8) Printer malfunction



Dongle replacement policy

- 1) If dongle malfunction, new dongle will be replaced for "FREE"
- 2) If dongle loss or missing, replacement fees of "RM499.00" per dongle will be charged.

All Payment are not refundable. Free usage of MCDS Software to access subscribed libraries and features during validity of the subscription. On expiration of the subscription, MCDS need to be returned and be deactivated.

Terms and Conditions: Upon expiration of the subscription, Live Update will not download updates for MCDS. You will not have up-to-date information on declaration guidelines and rates and other related information.

A grace period of 30 days after expiration of subscription is given for you to renew your subscription by paying the Annual Subscription Fee. If you renew the subscription after the 30 days grace period, you have to re-subscribe (meaning you have to pay all over again for the selection of libraries or features chosen).



Firewall & ports

Following are the information that required to configure the firewall setting. Should you need further clarification please don't hesitated to contact us.

Port need to open in order to run the eDec.Asia customs declaration system

- 1) Port 9898 - Communication port to EDI Server.
- 2) Port 9595 - Auto update communication port & auto update load balancing.
- 3) Port 7950 - Server Load balancing port for fail over prevention.

Following are some information for the destination IP address

Port 9898, 9595, 7950

(103.246.217.25) (103.246.217.24) (103.246.217.23) (1.9.126.254), (202.185.194.10)
(202.185.194.31) (202.185.194.36)(203.189.18.111) (203.189.18.112) (203.189.18.113)



(Malaysian Customs Declaration Software) MCDS Additional LAN User Installation



Option 1

Fresh installation



1) Please do visit our website :
<http://www.mcads.com.my>

2) Scroll to the bottom of our website you will be able to see the following screen:

Note:

There may be few available mirroring servers to download the “For Technical Use Only”, just click “RUN” after you have downloaded the patch.



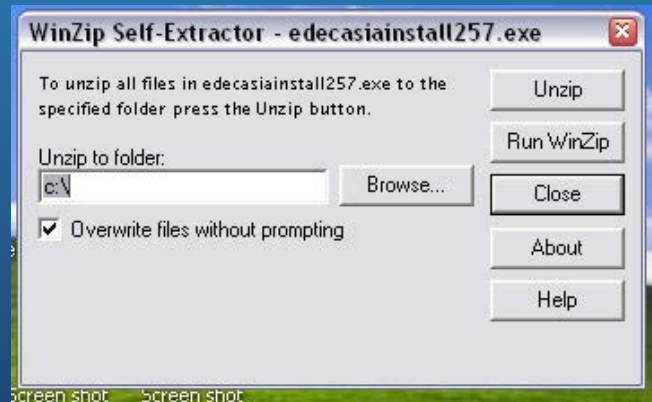
Click “Unzip” to start the process



Screen 01



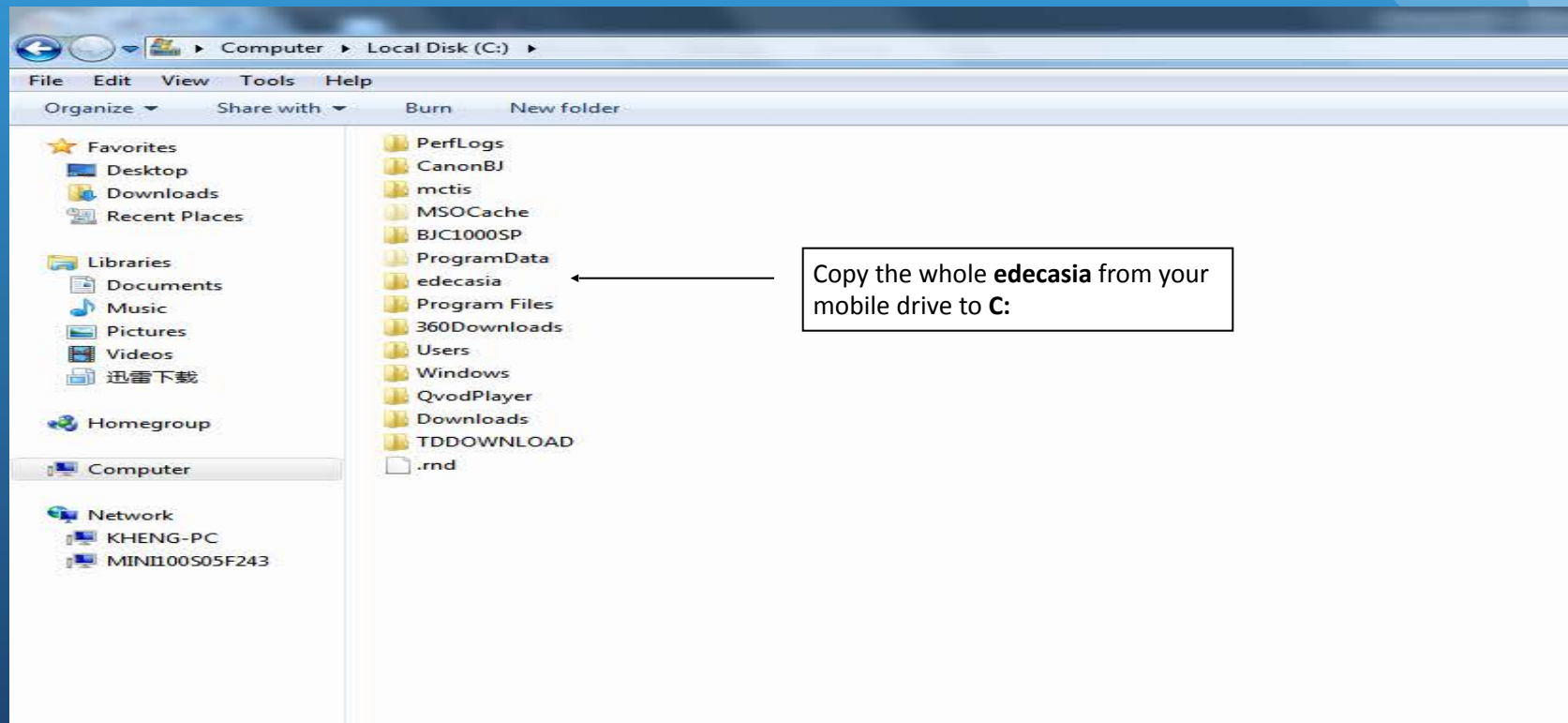
Click "OK"



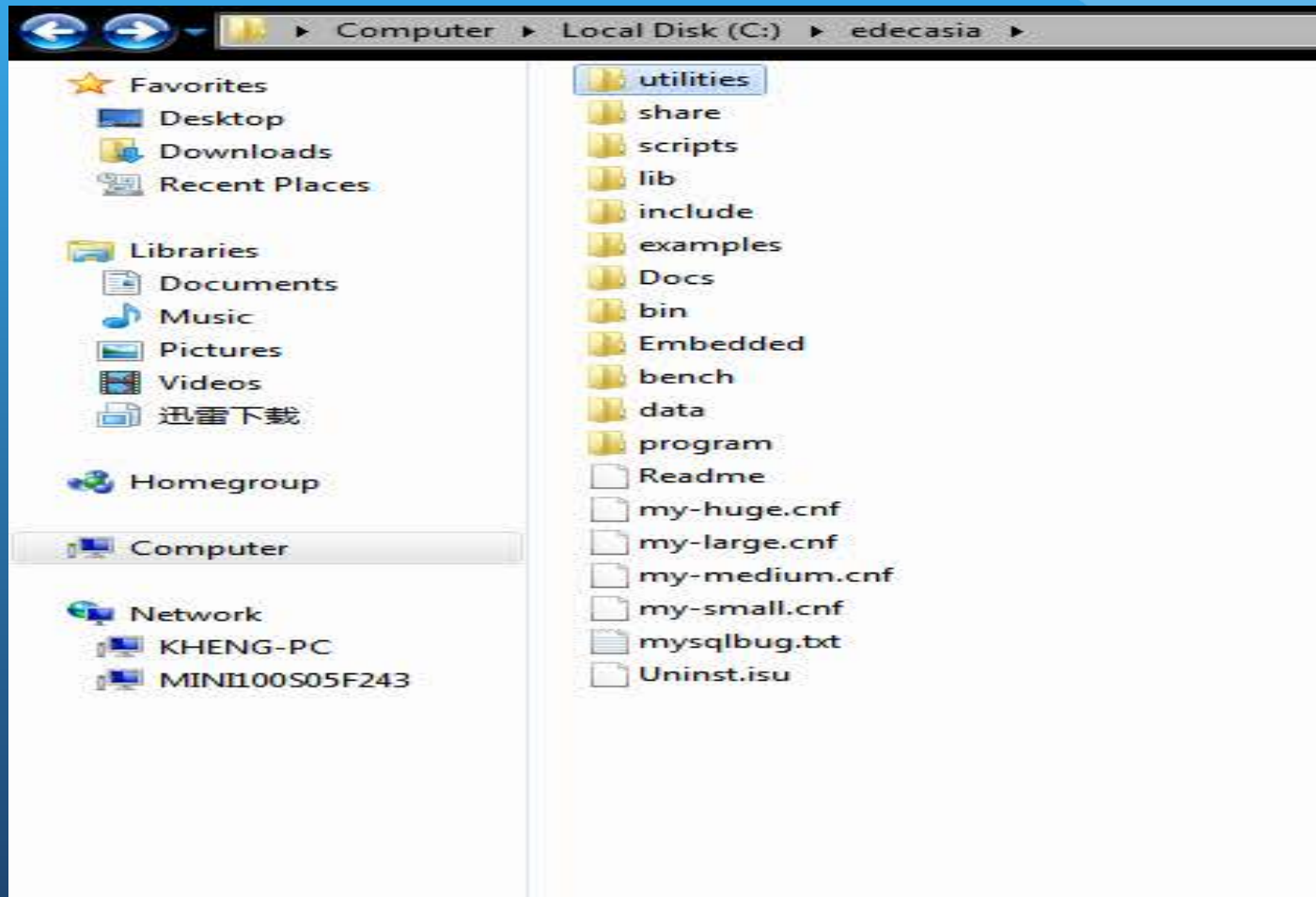
Click "CLOSE" to complete

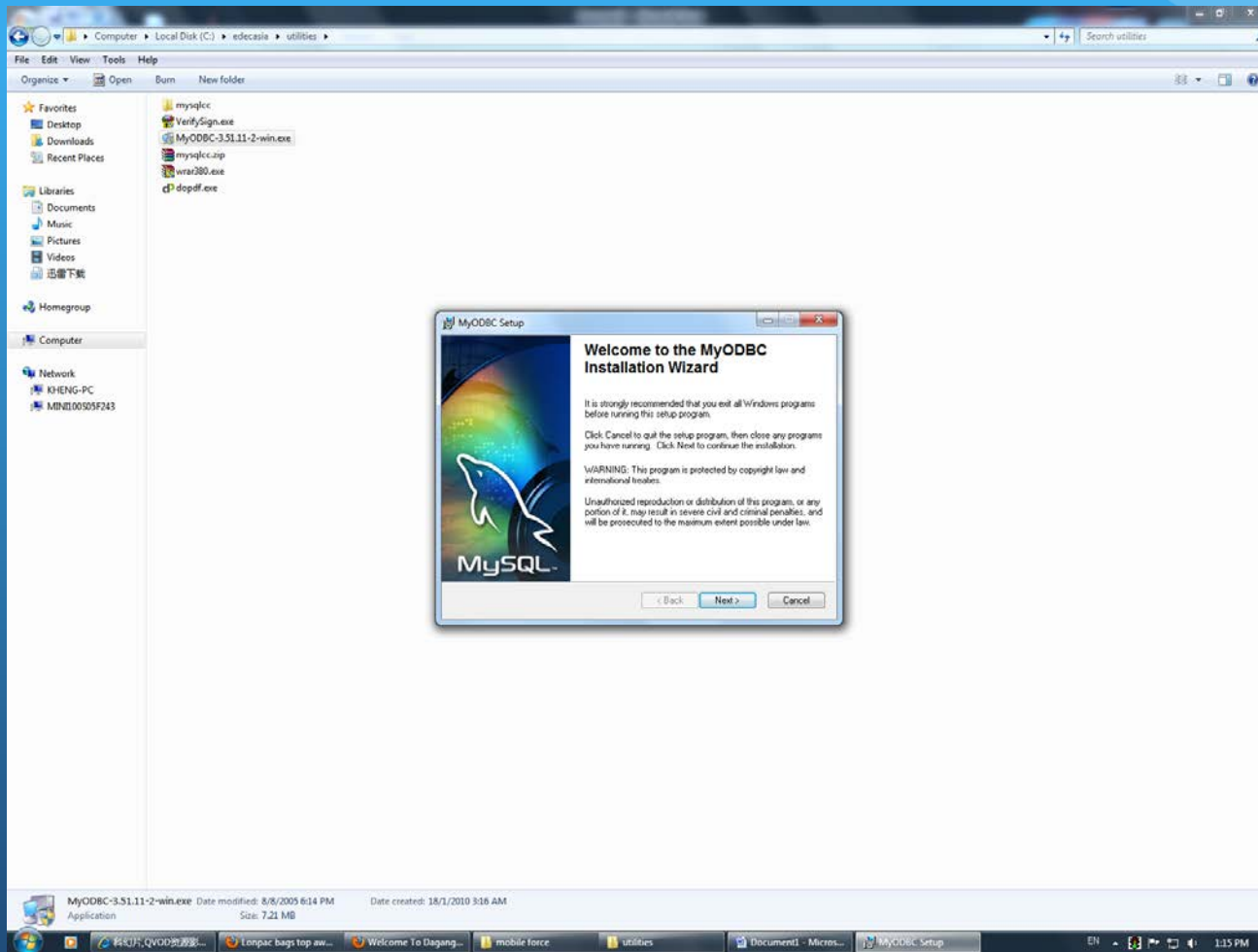
3) “EDECASIAPREINSTALL” will be appear on your C:/

4) Copy the whole “EDECASIA” folder inside “C:/edecasiapreinstall” to My computer / C:



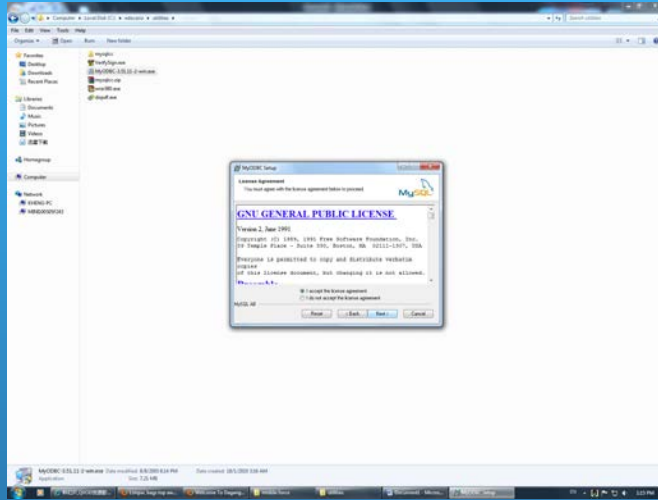
5) open the edecasia folder from c: and find a folder name utilities.



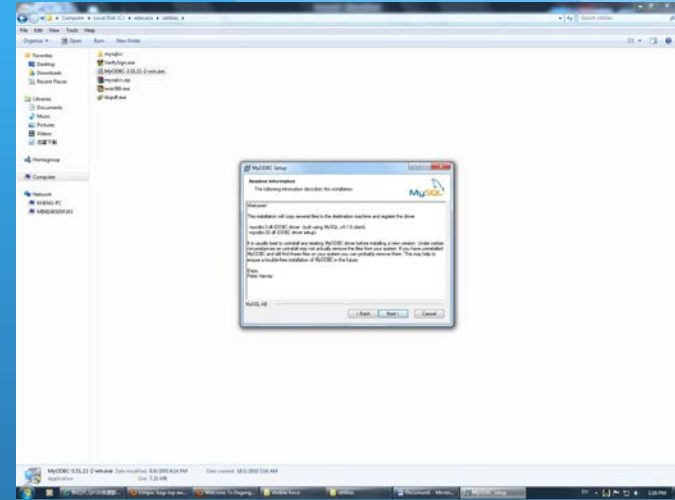


Note:
For windows 7 and above, right click :
“ Run as administrator”

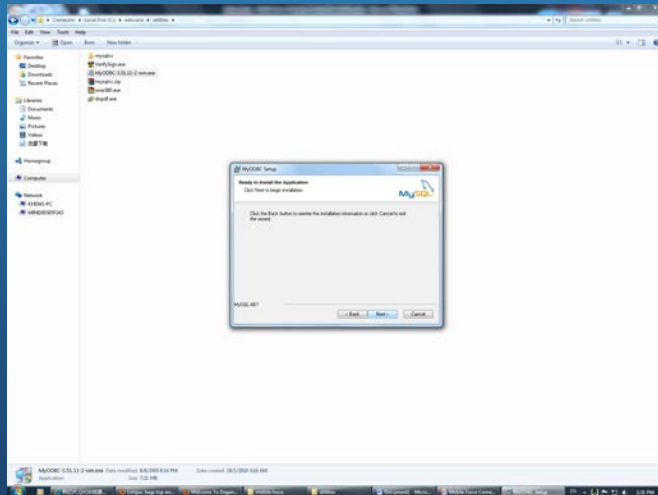
6) install MyODBC-3.51.11-2-win.exe under folder utilities.



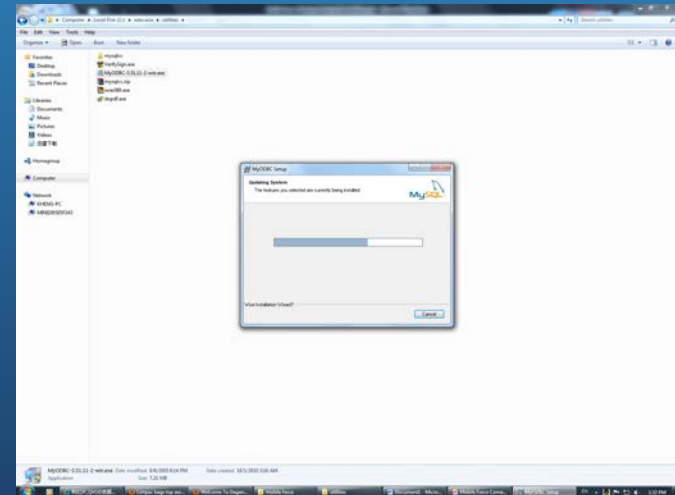
Screen 01



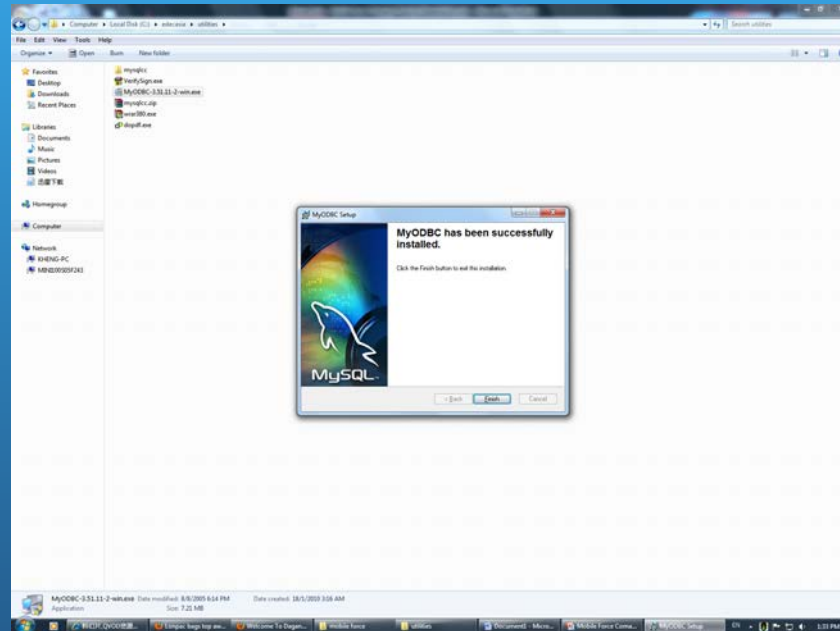
Screen 02



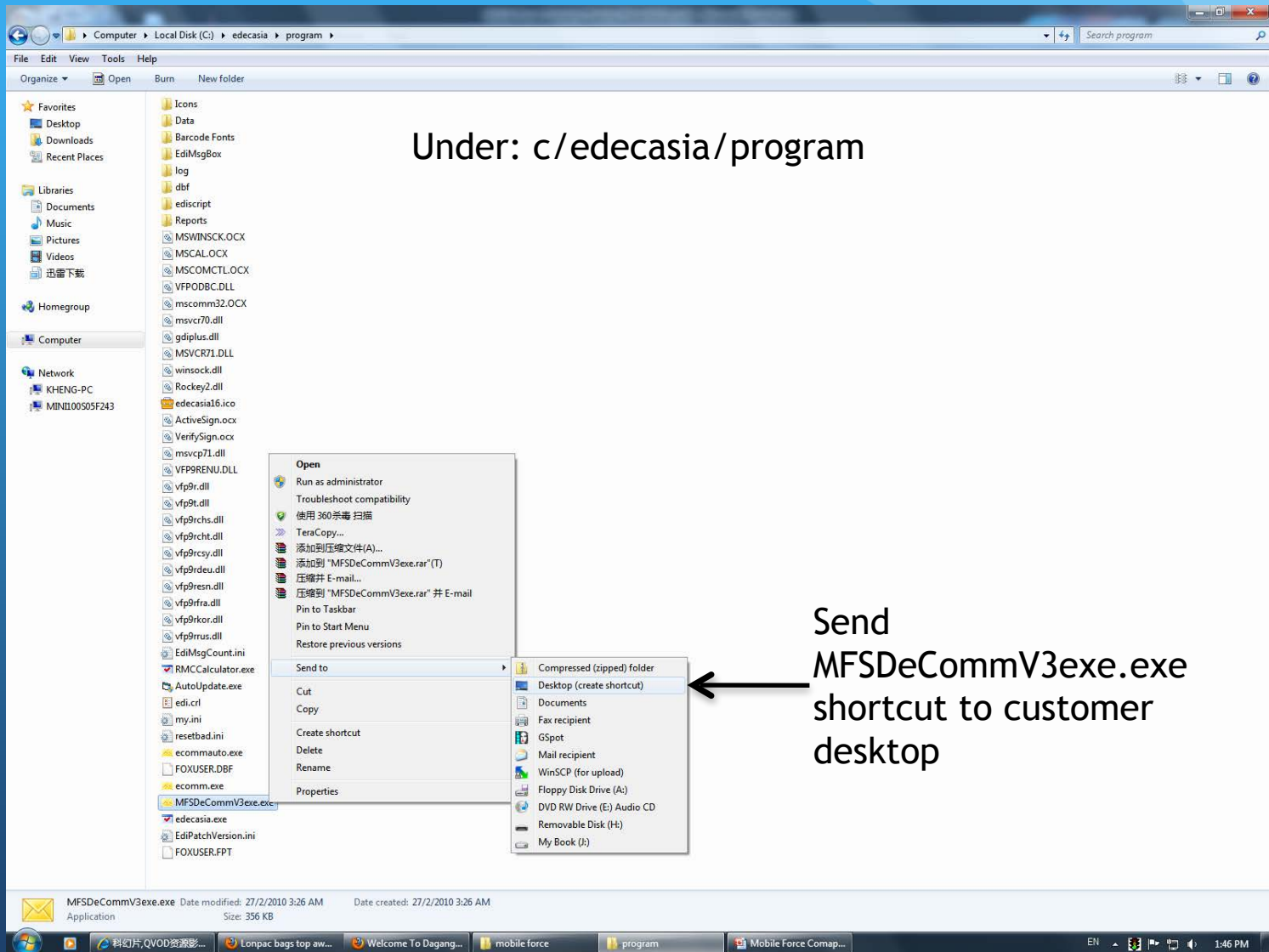
Screen 03



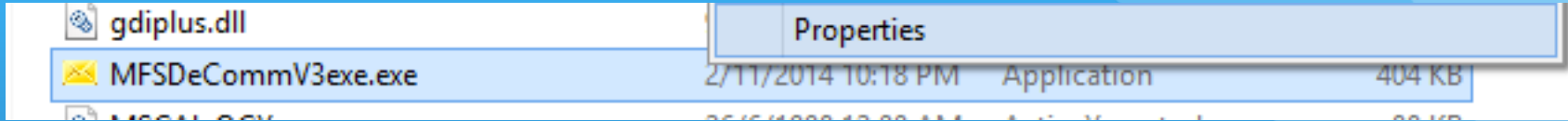
Screen 04



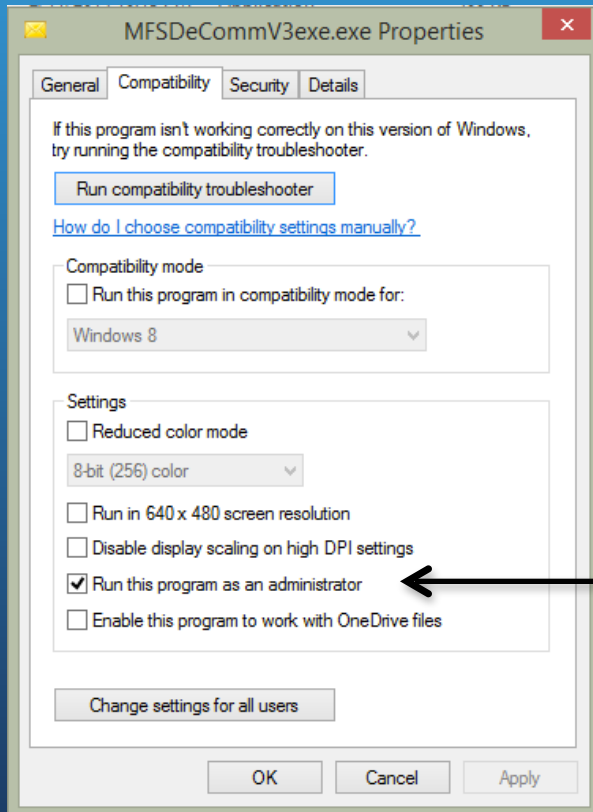
Screen 05



Note: The following step
only for windows 7 /
Windows Server 2008
and above



Right click on “MFSDDeCommV3exe.exe -> properties

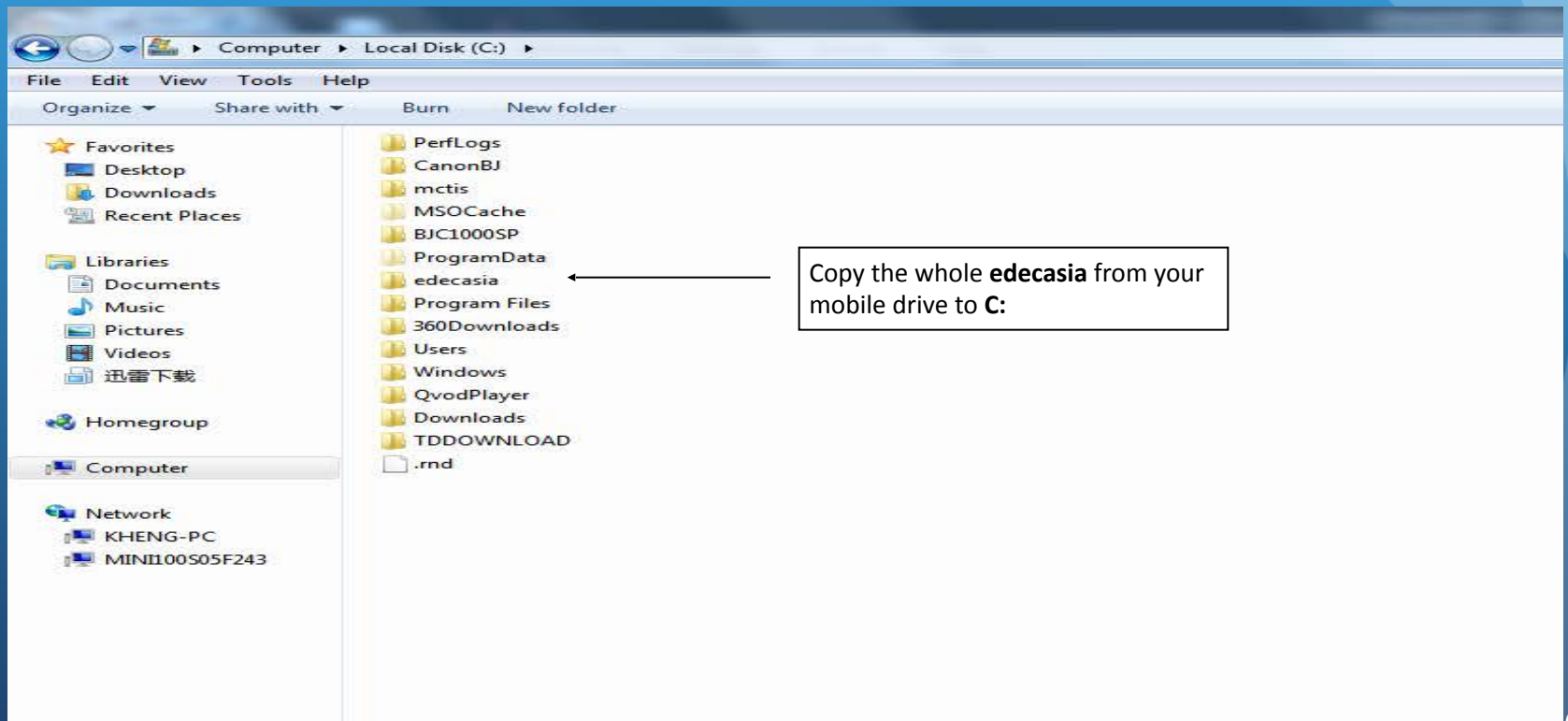


Under “Compatibly” tick
“Run the program as an
administrator”

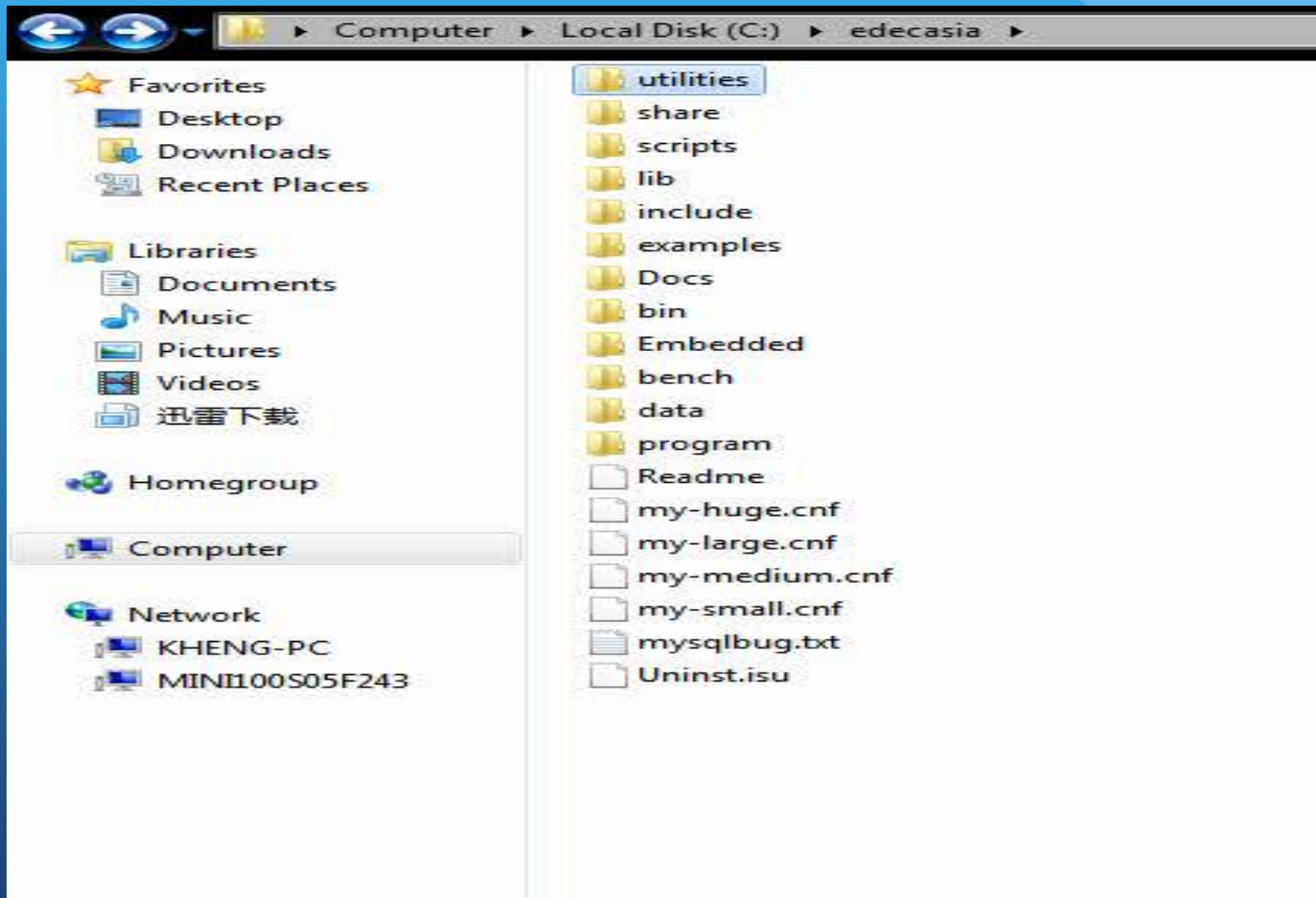
Option 2

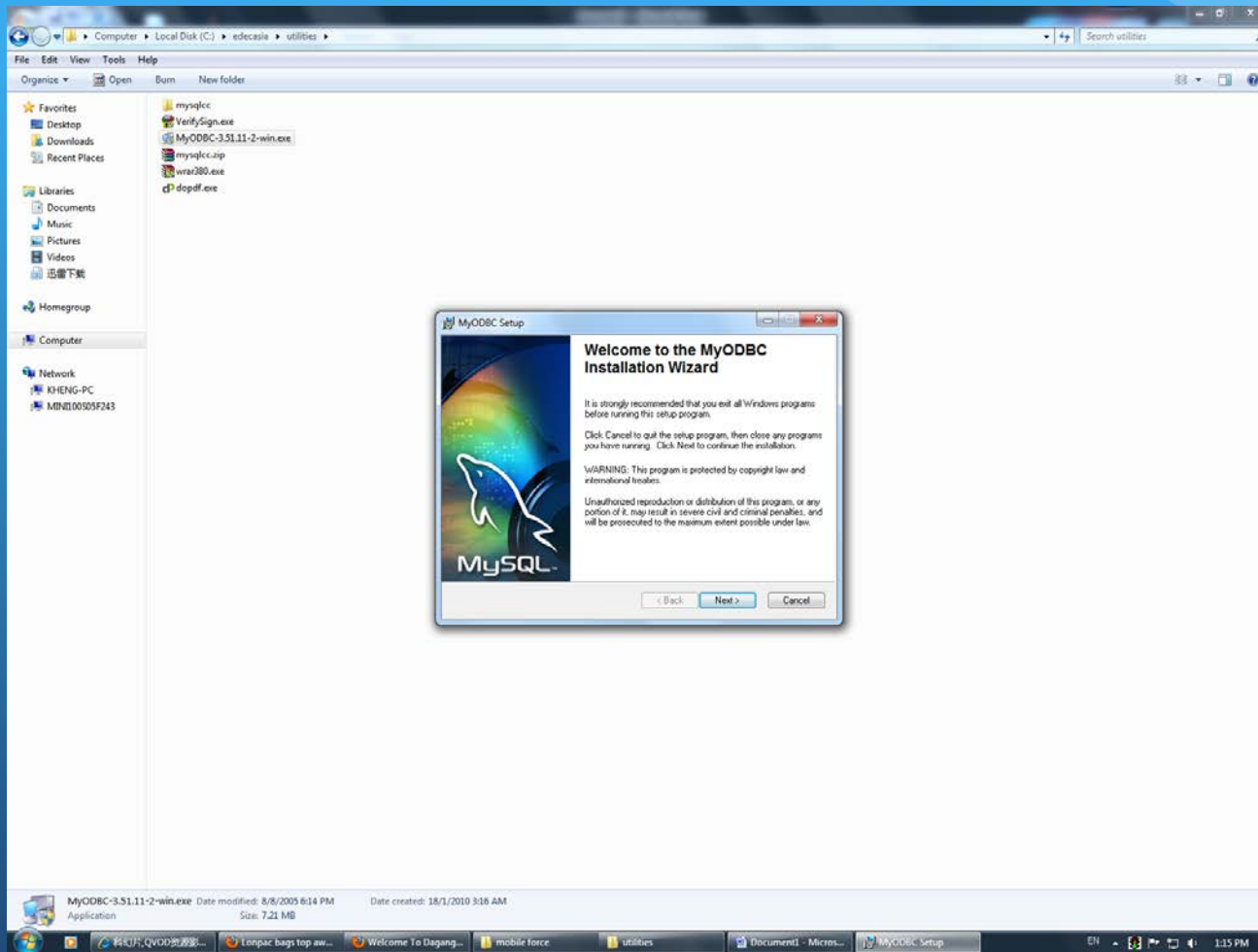
Existing installation

1) Copy the whole “EDECASIA” folder from other (existing) PC C:\ to the new PC you would like to install (My computer / C:)



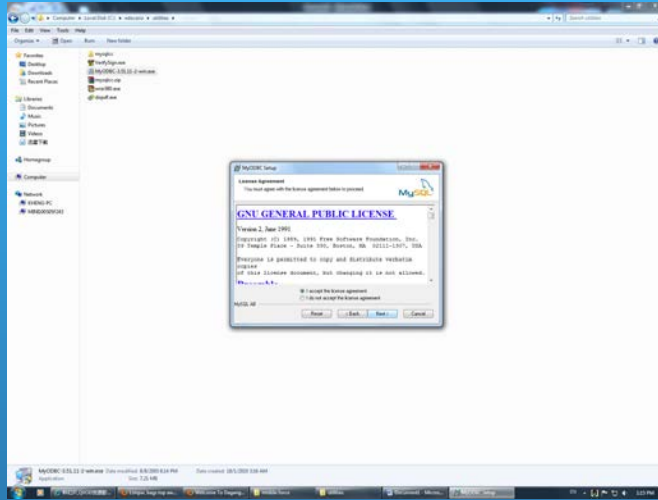
2) open the edecasia folder from c: and find a folder name utilities.



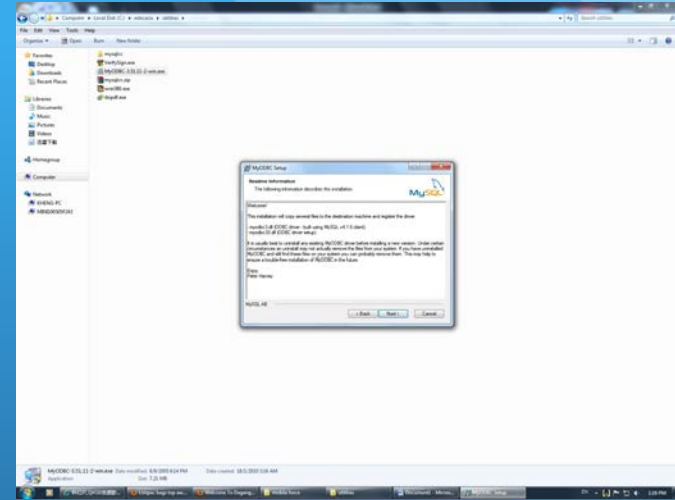


Note:
For windows 7 and above, right click :
“ Run as administrator”

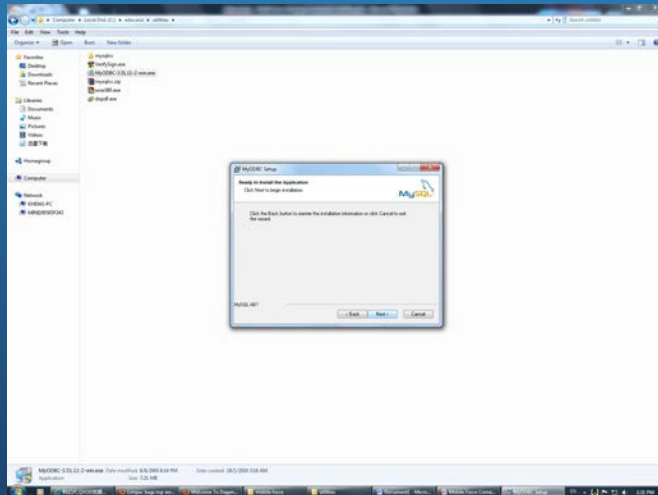
3) install MyODBC-3.51.11-2-win.exe under folder utilities.



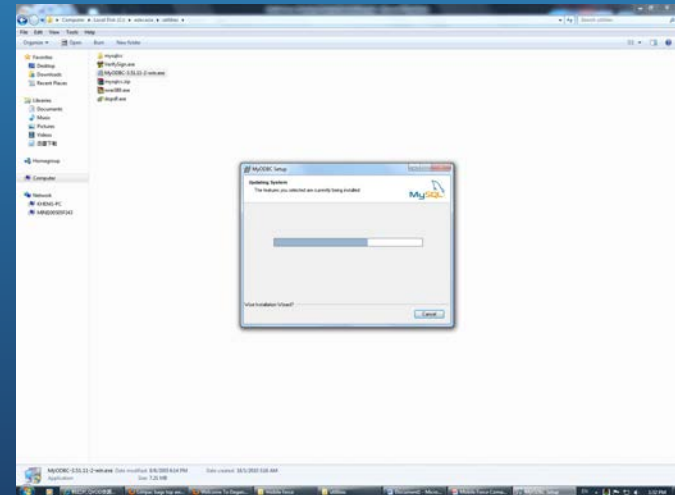
Screen 01



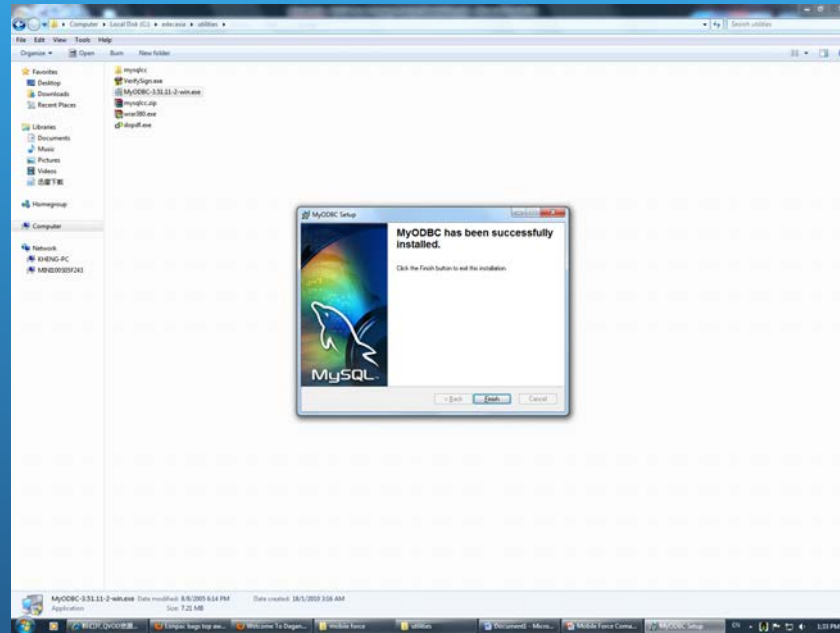
Screen 02



Screen 03



Screen 04



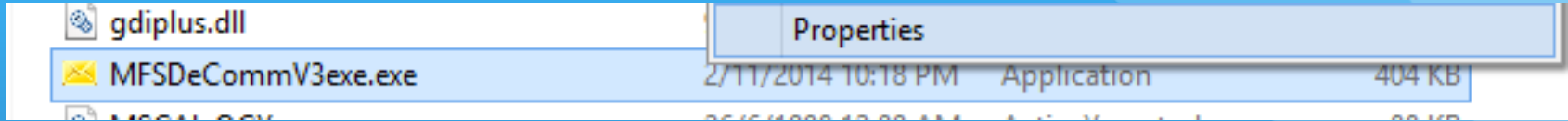
Screen 05

Under: c:/edecasia/program

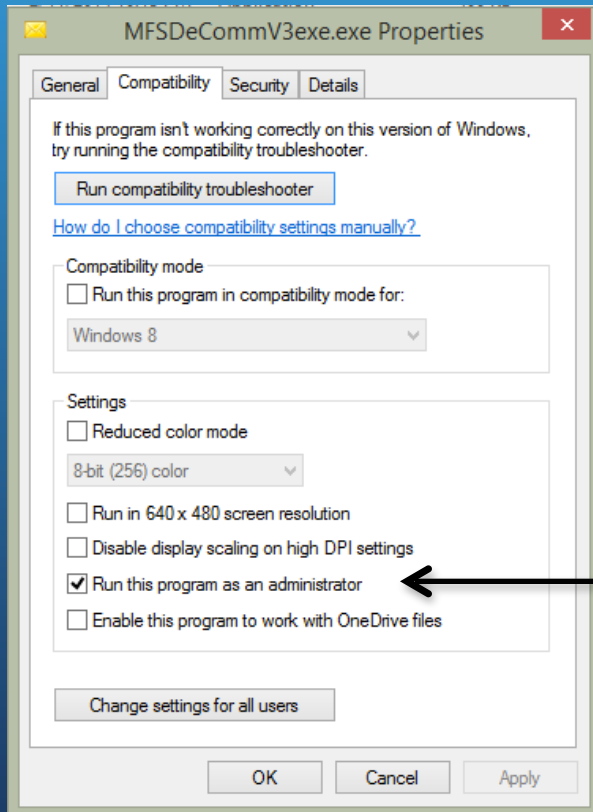
Send MFSDeCommV3exe.exe shortcut to customer desktop

Application: MFSDeCommV3exe.exe
Date modified: 27/2/2010 3:26 AM
Date created: 27/2/2010 3:26 AM
Size: 356 KB

Note: The following step
only for windows 7 /
Windows Server 2008
and above



Right click on “MFSDDeCommV3exe.exe -> properties



Under “Compatibly” tick
“Run the program as an
administrator”

Before lunch this declaration software please visit to our website <http://www.mcds.com.my> to get the latest patch.

After download the latest patch just unzip the patch to C:

Please do type in the Main PC (Server) IP on the client PC when the pop-up show on the screen

Connection String

Database Connection String

Server localhost

Database edecasia

Edit Save Cancel Close

Change the “Server” column to the Main PC (Server) IP