

**mcads**<sup>®</sup>



**MCDS GROUP OF COMPANIES**

MCDS SOFTWARE (M) SDN BHD (1053297-U)



## Notice

MCDS SOFTWARE SDN. BHD. makes no warranty of any kind with regards to this material, including, but not limited to, implied warranties of the merchantability and fitness for a particular purpose.

MCDS SOFTWARE SDN. BHD. shall not be liable for errors contained herein or for incidental or consequential damages in connection with the furnishing, performance, or use of this material.

No part of this document may be photocopied, reproduced or translated to another language without prior consent of MCDS SOFTWARE SDN. BHD.

For more Legal & copyright info please visit to <http://www.mcDs.com.my/legal/>

Date : 01 October 2014



## Appendices

There are a few appendices provided at the last portion of the manual. Some basic code/decode listing is provided as a reference so that user can adapt easily the application of MCDS. Before the user starts to use the system for data entry or mere system inquiry, user is advised to browse through the codes.

## Terms Used In This

As the users start to read the user guide, there will be many terms User Guide which users have come across before especially those using Microsoft applications.

## Note

This user guide does not attempt to explain the basic terms such as menu options, icons, screens and mouse clicks. For more information on these terms, please refer to the Microsoft Windows manual or other manuals which provide some guides as how to start using a computer.



Menu Selection/Path Selection of menu option is indicated by a series of menu options separated by vertical bars. For example, File | Exit means that users should select File from the main menu and subsequently select the Exit option from the pull-down File menu.

The eDec.Asia Malaysian Customs Declaration System subscription provides you with email and telephone technical support. In addition, your subscription includes 1 year on Up-To-Date information, features and email support on subscribed modules.

Subscription DON'T include the support as following:

- 1) System crash due to computer virus infection.
- 2) Network equipment error (For LAN users).
- 3) Internet connections problem.
- 4) Port (9898, 9595, 7950) Blocked by the Firewall.
- 5) Re-installation required due to computer hardware upgrade or relocation.
- 6) Re-training for the new staffs
- 7) Computer Hardware failure
- 8) Printer malfunction
- 9) Application maintenance (Optimise Database, Purge Database and/or Database maintenance)



## Dongle replacement policy

- 1) If dongle malfunction, new dongle will be replaced for "FREE"
- 2) If dongle loss or missing, replacement fees of "RM499.00" per dongle will be charged.

All Payment are not refundable. Free usage of MCDS Software to access subscribed libraries and features during validity of the subscription. On expiration of the subscription, MCDS need to be returned and be deactivated.

**Terms and Conditions:** Upon expiration of the subscription, Live Update will not download updates for MCDS. You will not have up-to-date information on declaration guidelines and rates and other related information.

A grace period of 30 days after expiration of subscription is given for you to renew your subscription by paying the Annual Subscription Fee. If you renew the subscription after the 30 days grace period, you have to re-subscribe (meaning you have to pay all over again for the selection of libraries or features chosen).



## Firewall & ports

Following are the information that required to configure the firewall setting. Should you need further clarification please don't hesitated to contact us.

Port need to open in order to run the eDec.Asia customs declaration system

- 1) Port 9898 - Communication port to EDI Server.
- 2) Port 9595 - Auto update communication port & auto update load balancing.
- 3) Port 7950 - Server Load balancing port for fail over prevention.

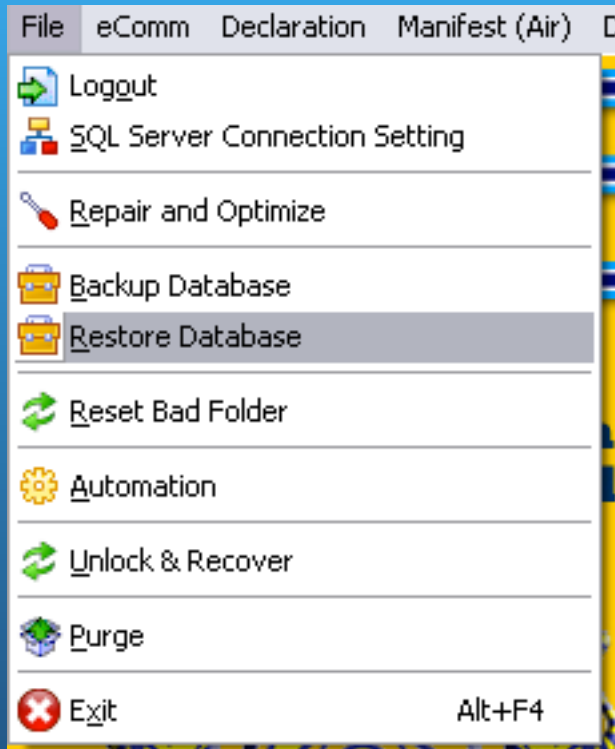
Following are some information for the destination IP address

Port 9898, 9595, 7950

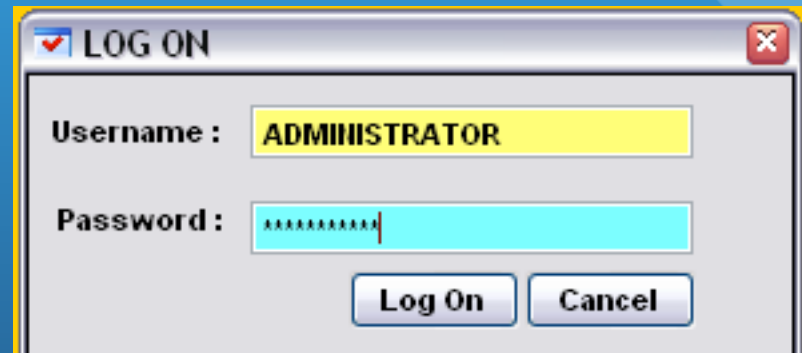
(103.246.217.25) (103.246.217.24) (103.246.217.23) (1.9.126.254), (202.185.194.10)  
(202.185.194.31) (202.185.194.36)(203.189.18.111) (203.189.18.112) (203.189.18.113)



# MCDS Backup & restore Database

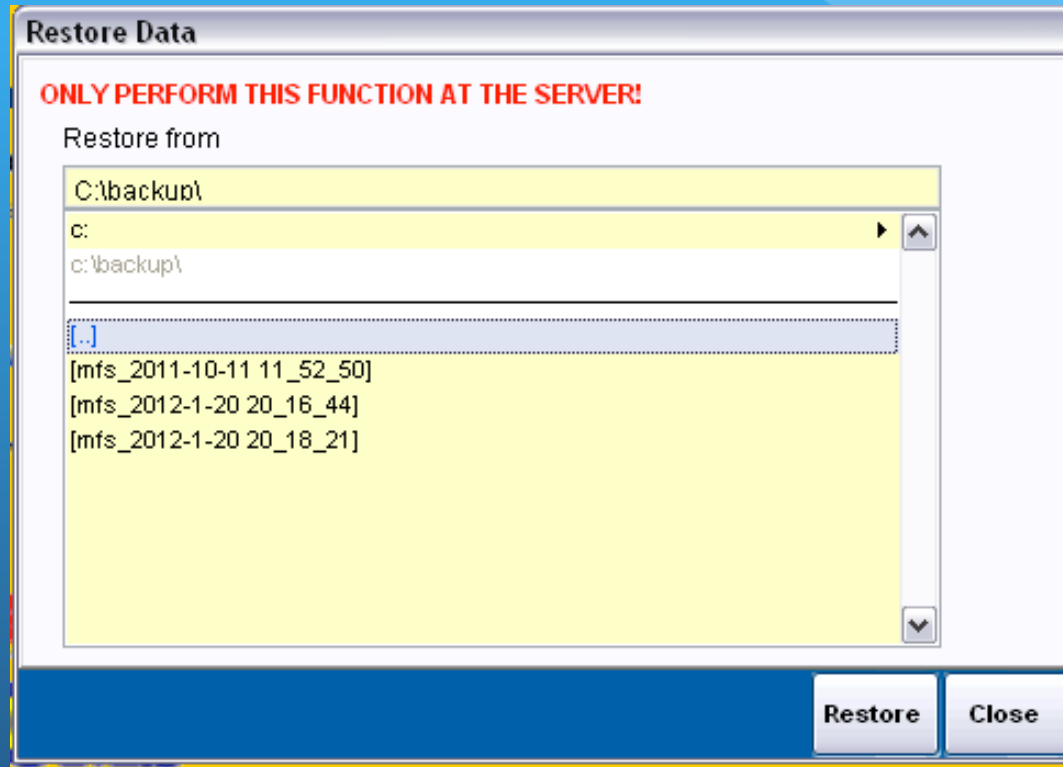


1) File > Restore Database



2) Username is administrator  
Password is m\*\*\*\*\*  
Kindly Contact Us for the password.



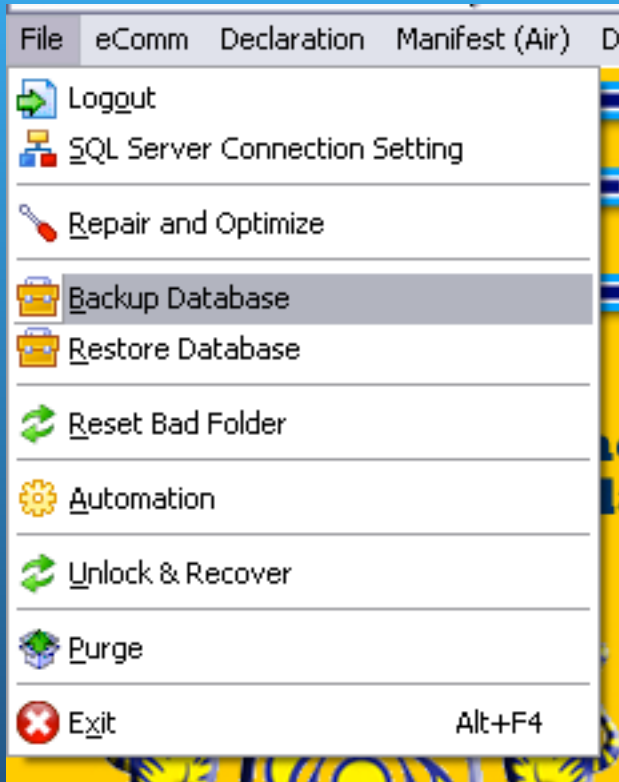


3) Select the date /backup to be restore.

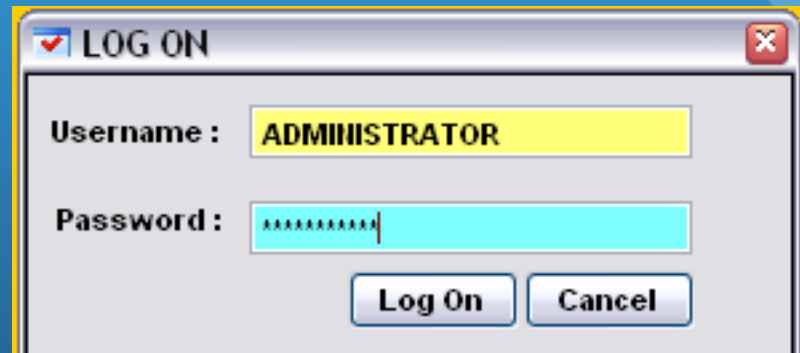
**\*\* When restoring, Data connection will be slow**

# Warning :

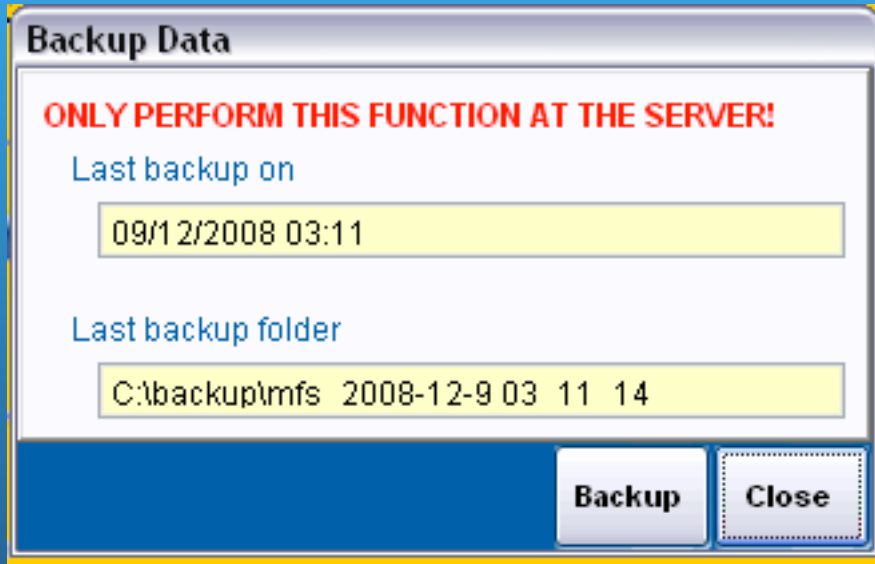
- Restoring Data will cause lost data on the current database, please preform under your own risk.
- User are advice to restore on NEW database/ PC, for review old job.



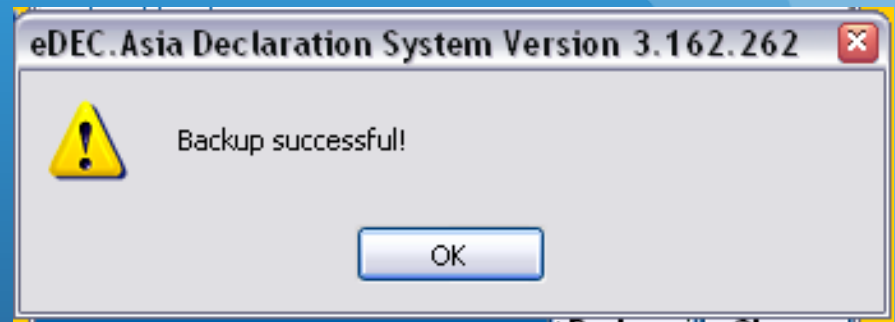
1) File > Backup Database



2) Username is administrator  
Password is m\*\*\*\*\*  
Kindly Contact Us for the password.



Backup will be save on C:\backup\

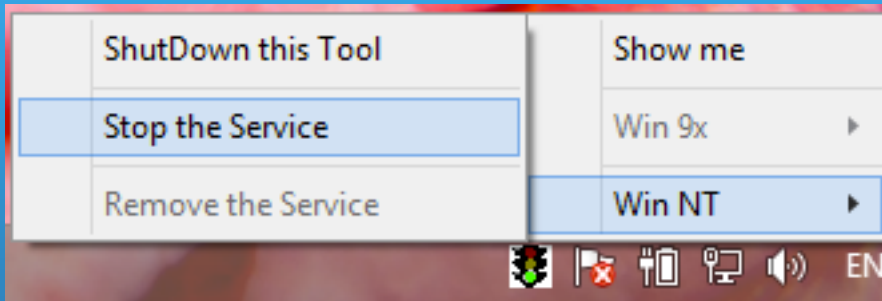


Click "OK" to complete the process.

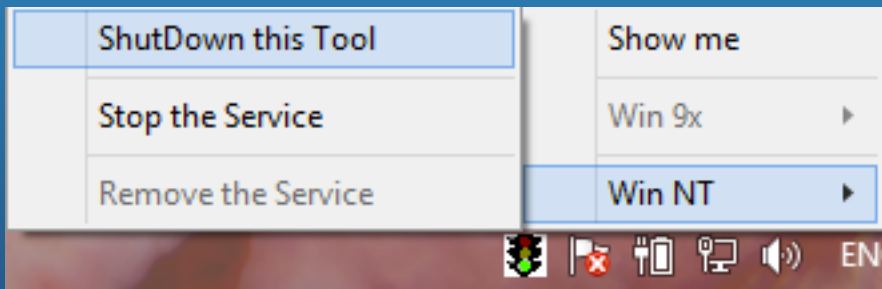
**\*\* when restoring, the data connection will be slow**



# Option 2 for Backup MCDS Software



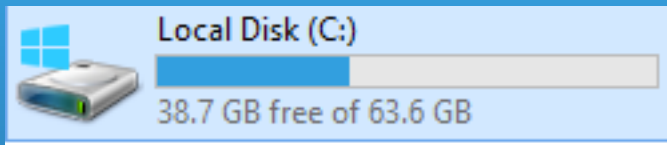
1) Right click on Mysql (traffic light icon) under win NT “Stop the service”



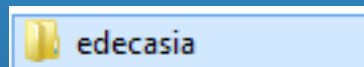
2) Right click again on Mysql (traffic light icon) under win NT “ShutDown This Tools”

- Note: Mysql service must be shut down to perform the following step

- once the Mysql service is shut down



under “My Computer” Local Disk C:



Copy the entire “edecasia” folder to your external backup storage

- Note: please zip the “edecasia” folder before perform any backup.